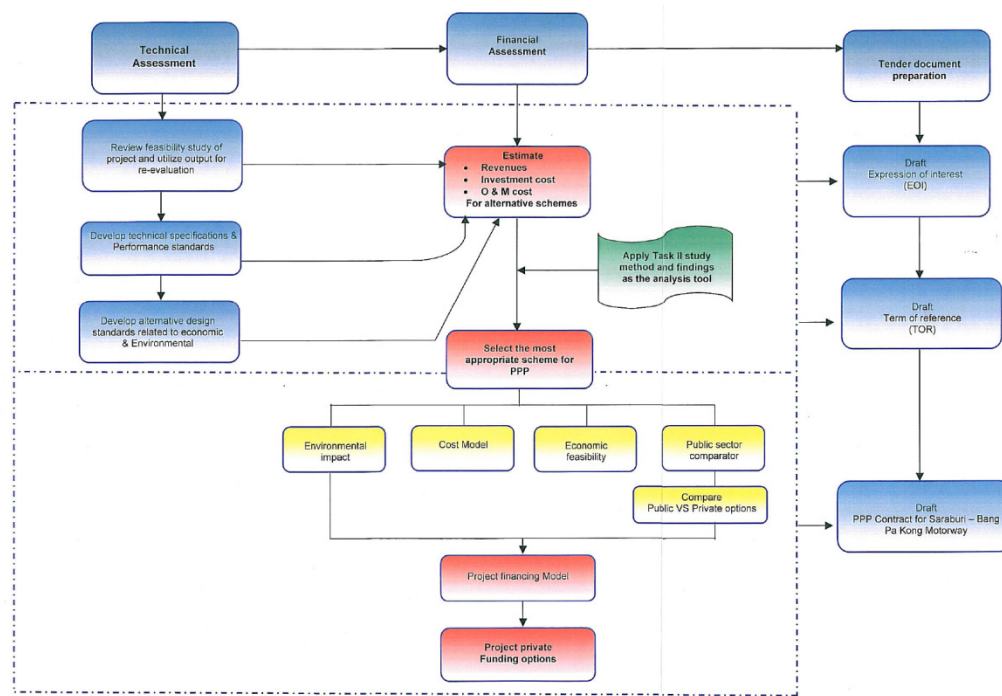


Framework and Case Study for Public-Private Partnership in Thailand's Highway Program

Client: Department of Highways (DOH),
Ministry of Transport

Period of Appointment: 2007-2008

The Department of Highways (DOH) received Highway Management Program Loan from International Bank for Reconstruction and Development (IBRD). AMP Consultants Ltd., in association with Thai MM Co., Ltd., was then appointed to advise DOH on the Project Framework and a Case Study for Public-Private Partnership in Thailand's Highway Program.



The work included (i) recommendation of restructuring strategies for the regulatory regime and related institutions in the highways development sector to support public-private partnership in Thailand; (ii) assessment of international and local financial market conditions; (iii) evaluation of various potential PPP schemes for DoH's motorway program; (iv) recommendations on bid structuring and procurement preparation to enable a smooth bidding process for the Bang Pa-In - Nakhon Ratchasima Motorway Project

