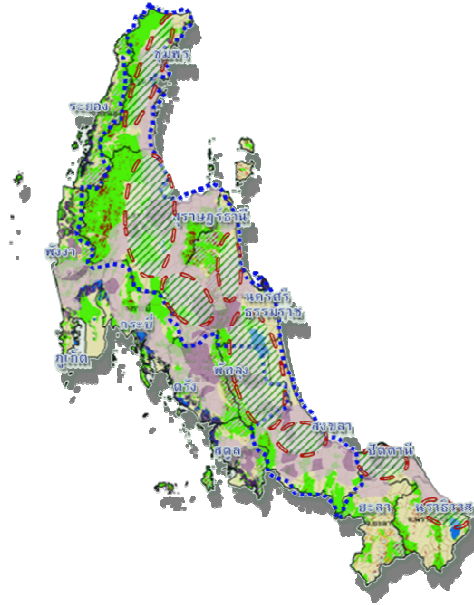
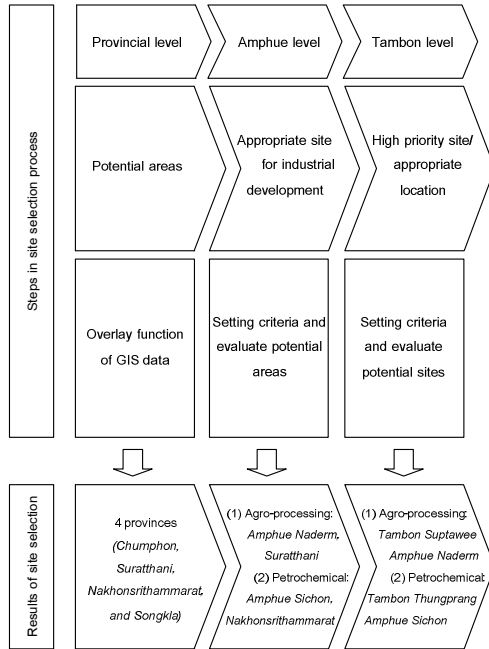


The Study on Development of High Potential Industries and Services in the Southern Region

Client: Office of the National Economic and Social Development Board (NESDB)
Period of Appointment: 2008-2009



AMP Consultants Ltd. was commissioned to advise the Office of the National Economic and Social Development Board (NESDB) on the development of high potential, large-scale industries in the Southern Region of Thailand. Main tasks included assessment of strategic opportunities for development of automotive, electronics, petrochemical, steel and agricultural processing industries in the Southern Region; assessment of strategic locations for potential industries; and conceptual design of land-use for the recommended industries and areas. The Study also identified key

environmental concerns to be addressed during the implementation of these types of industrial developments. An additional task was development of a GIS database for the 6 key economic provinces (i.e. Bangkok, Chachoengsao, Chonburi, Rayong, Ayutthaya and Samut Sakorn) to enhance NESDB capability.

