

# Advice on Institutional, Safety and Service Integration Issue

Client:

Department of Land Transport, Royal Thai Government

Period of Appointment: 1998 to 1999

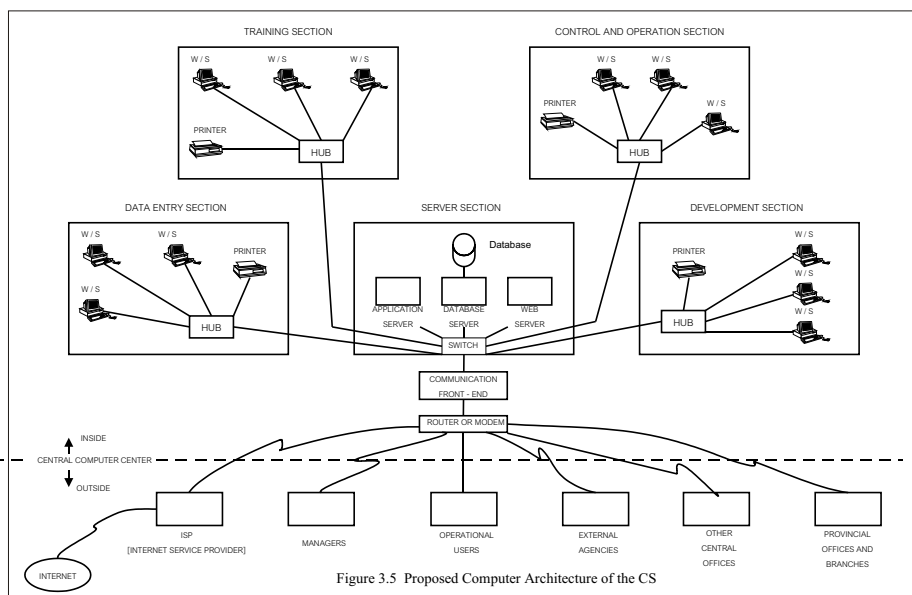


AMP Consultants Ltd, in association with JMP Consultants Ltd and Transport Research Laboratory (TRL) of the UK was commissioned by Department of Land Transport to provide detailed advice on Information Institutional, Safety and Service Integration Issues, The project was funded by the ADB.

The Project work was targeted at bringing greater efficiency to the operation of the Department of Land Transport by examining current functions and formulating recommendations which will enhance the performance of the Department in fulfilling its primary duties

of bringing about improved safety, environment, quality and efficiency in land transport system throughout the country under a range of privatisation option. The Project contained several elements as follows.

- Organization and Institutional Issues
- Management Information System [MIS] Definition
- Inter-City Transport
- Fleet Management System
- Vehicle Safety Regulations
- Training



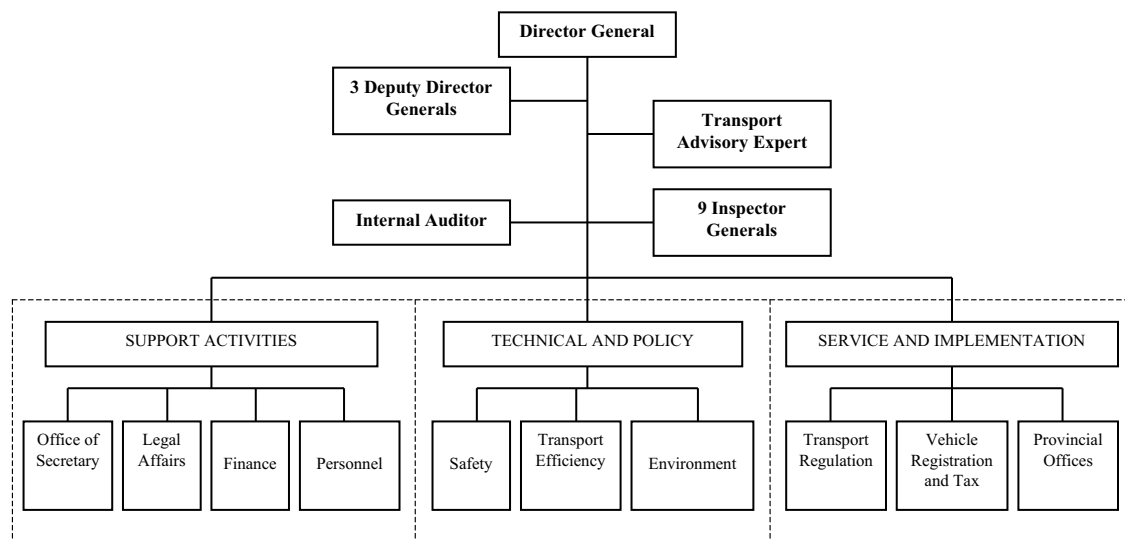
# Advice on Institutional, Safety and Service Integration Issues

**Client:** Department of Land Transport, Royal Thai Government  
**Period of Appointment:** 1998 to 1999

Advice on Institutional, Safety and Service Integration Issues Project of Department of Land Transport was studied by AMP Consultants Ltd, in association with JMP Consultants Ltd and Transport Research Laboratory (TRL) of the UK.

## TRANSPORT EFFICIENCY BUREAU (TEB)

This Bureau would be developed from the existing Technical and Planning Division. It would have two main functions, support to DLT and Technical and Planning Development.



One of the principle Tasks in this project was Organisation and Institutional Issues which was set down realistic scenarios for future change in the role of DLT to develop MIS, organisational, staff skill and other resource enhancements required to support the changed situations.

The result of study was to modify the current structure of the Department by re-naming key bureaux and division to reflect the prime duties, clearly priorities, re-emphasising to its staff and its prime responsibilities. AMP Consultants Ltd suggested to restructure to be three types of Division or Bureaux within DLT.

A brief function of each of the newly defined Technical and Policy Bureaux and Division are as follows:

## THE ENVIRONMENTAL DIVISION (ED)

This new division would elevate the responsibility of DLT for environmental improvement. The new division would include emissions testing and development sub-divisions.

## THE SAFETY BUREAU (SB)

The new core Safety Bureau would have Engineering and Safety Bureau. In its Engineering Division it would not include emission testing but in the Safety Division it would have a clearly defined vehicle safety regulation section responsible for the development and promotion of vehicle safety regulation.