

National Transport Database and Information Systems

Client:

Office of Transport and Traffic Policy and Planning

Period of Appointment:

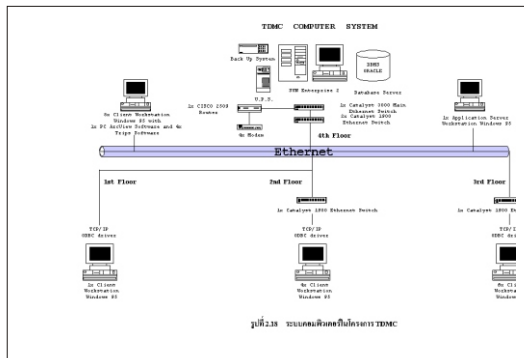
1997 to 2001

AMP Consultants Ltd and ESRI has been commissioned by the Office of Transport and Traffic Policy and Planning (OTP) to develop a National Transport Database for Thailand.

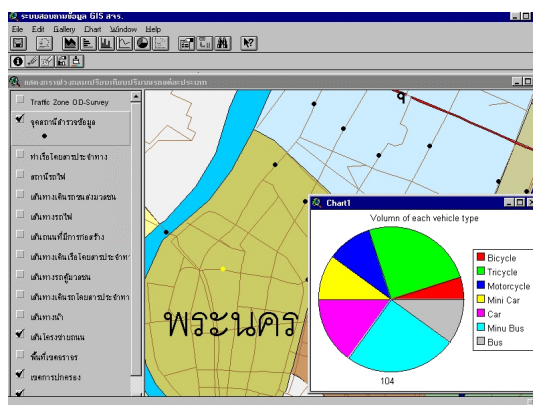
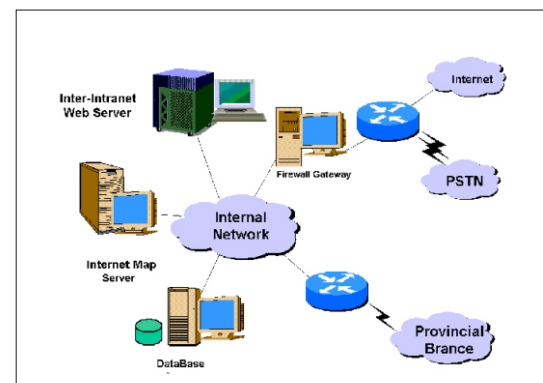
The Database Management System (Database Server) employs Oracle software and SUN Enterprise 2 hardware. The current system serves some 24 workstations throughout OTP.

AMP Consultants Ltd services include

- Data collection, assessment and manipulation
- Database design
 - structure
 - data input
 - report output
 - sectional relationships
 - screen designs
 - hardware specification
 - communications specification
- Database management



The Database is divided into 21 sections including transport demand by mode, transport economics, environmental data, travel speed, safety, socio-economics, land use, transport infrastructure inventory, project implementation management and mapping. It is relational in characteristics that specified reports can be produced using various database sections. Reports can be produced in the form of tables, graphs histograms, pie-diagrams etc. All input and output screens have been designed using GIS based system.



Thailand now has a national transport database and standardised specifications for data collection and input which are adopted by all Government agencies active in the transport field.